

ELA

RESIDENCES

---

) ( *Dorchester Collection*

DUBAI

# AN ENCLAVE OF ETERNAL LIGHT





# AN INCOMPARABLE PORTFOLIO

OMNIYAT  
THE ART OF ELEVATION

OMNIYAT has forged a masterful reputation for developing legendary masterpieces that carry a lasting legacy. In Dubai and the wider world, OMNIYAT has completely redefined the concept and limits of luxury living, creating refined works of art which effortlessly blend creativity, quality and rarity.

OMNIYAT has cultivated enduring relationships with world-renowned architects such as Zaha Hadid and Foster + Partners, celebrated interior designers such as Gilles et Boissier and Yodezeen, and the definitive signifiers of luxury hospitality, Dorchester Collection. With the acumen and experience to ensure every project is created at the summit of refinement, OMNIYAT defines and fulfils the wishes of the world's most discerning clientele.

We imagine the extraordinary and build it into reality. Elevating the exceptional to create immersive living experiences that redefine the concept of luxury living.





# THE EPITOME OF THE PALM

With the inauguration of One at Palm Jumeirah, Dorchester Collection, Dubai, OMNIYAT brought a new icon to the Dubai skyline.

When this was joined by AVA at Palm Jumeirah, Dorchester Collection, Dubai, the impact of these two developments was immense, which firmly established them as the most distinctive and desirable residential properties on Palm Jumeirah.





This reputation was further magnified with the addition of ORLA and ORLA Infinity. These two visionary developments, again boasting unprecedented levels of service from Dorchester Collection, confirmed OMNIYAT as the ultimate arbiter of architectural excellence, affording privileged access to the waterfront of Palm Jumeirah.

The next chapter of this story is now commencing. OMNIYAT, again in concert with Dorchester Collection and other globally renowned partners, will redefine both concept and expectations of resort living.

Coming soon, ELA Residences will grace Palm Jumeirah with a new definition of luxury.





# ELA

RESIDENCES

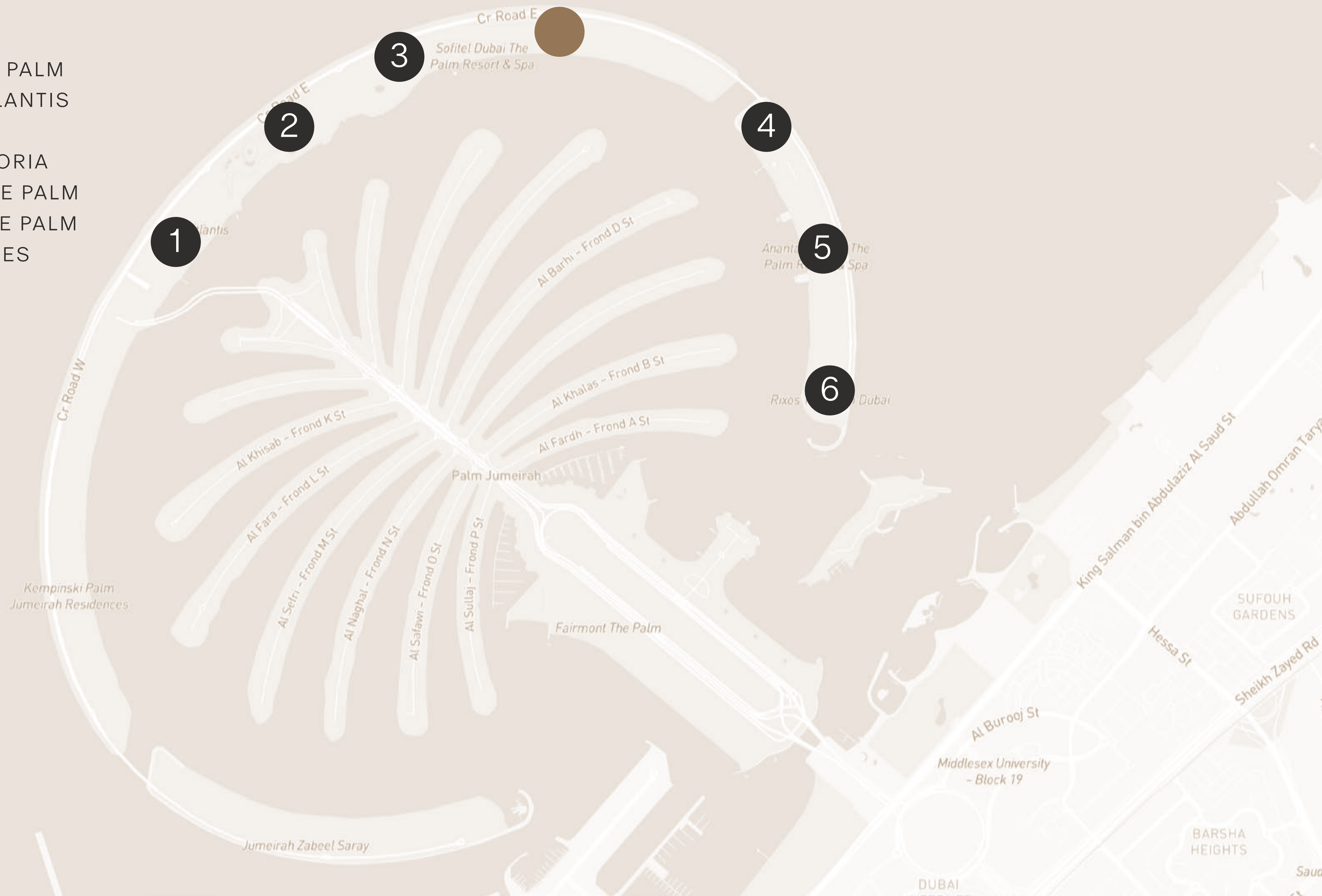
*Dorchester Collection*

DUBAI



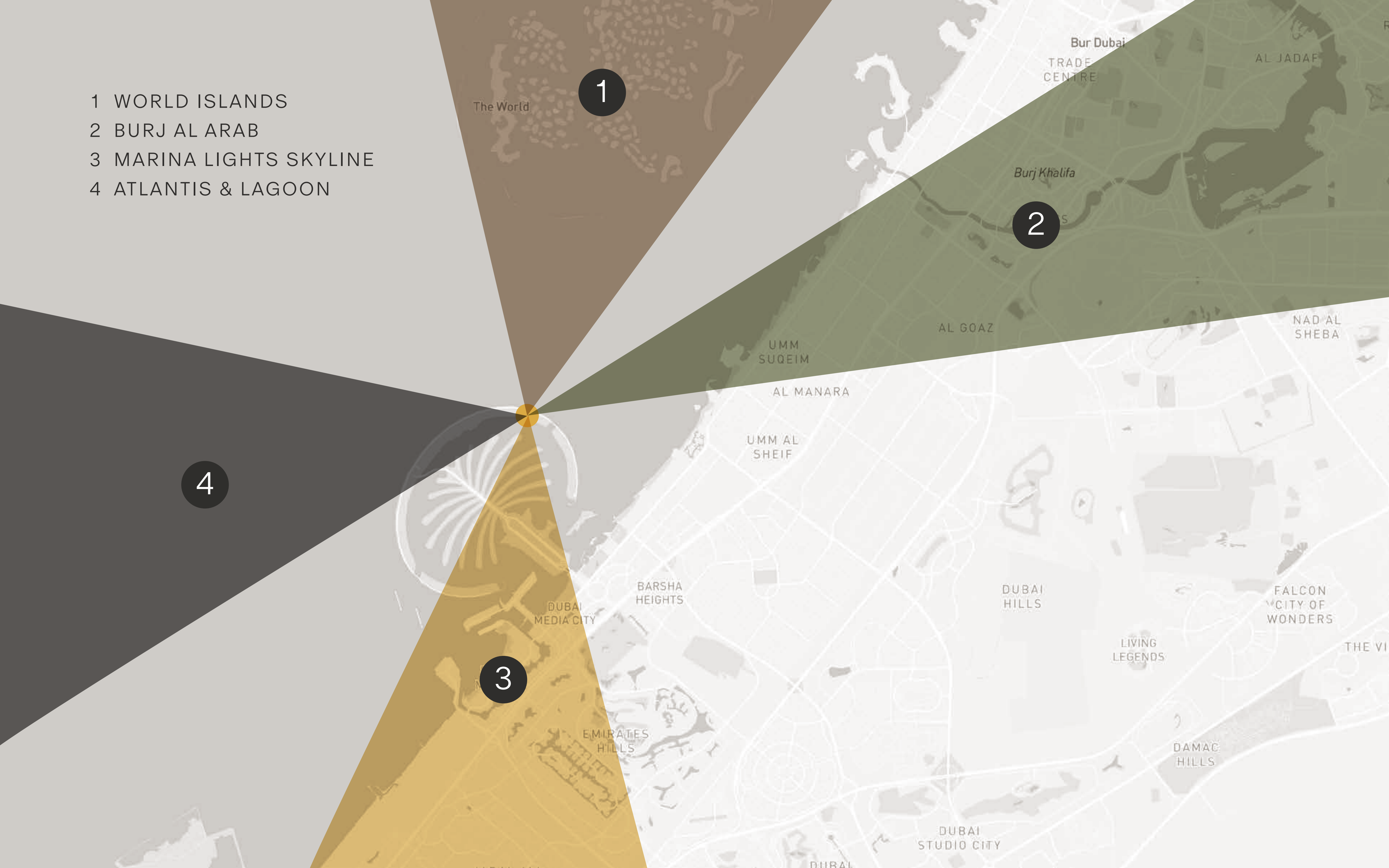


- 1 ATLANTIS, THE PALM
- 2 THE ROYAL ATLANTIS
- 3 THE SOFITEL
- 4 WALDORF ASTORIA
- 5 ANANTARA, THE PALM
- 6 THE RIXOS, THE PALM
- ELA RESIDENCES





- 1 WORLD ISLANDS
- 2 BURJ AL ARAB
- 3 MARINA LIGHTS SKYLINE
- 4 ATLANTIS & LAGOON



1

2

4

3

The World

Bur Dubai  
TRADE  
CENTRE

AL JADAF

Burj Khalifa

AL GOAZ

NAD AL  
SHEBA

UMM  
SUQEIM

AL MANARA

UMM AL  
SHEIF

BARSHA  
HEIGHTS

DUBAI  
MEDIA CITY

DUBAI  
HILLS

FALCON  
CITY OF  
WONDERS

LIVING  
LEGENDS

THE VI

EMIRATES  
HILLS

DAMAC  
HILLS

DUBAI  
STUDIO CITY

DUBAI



# INTRODUCING ELA RESIDENCES

Very rarely, what seem to be recognised parameters of a field are redefined by something so exceptional it requires the established definitions to be recast.

ELA Residences is such a creation. It establishes a new criterion for luxury lifestyle, rewriting every existing standard and expectation.

Perfectly positioned on Palm Jumeirah, secluded and soaked in immortal light, this is the culmination of opulence and elegance, retreat and serenity. An enclave designed to be eternally yours.







# A WORLD FIRST DORCHESTER COLLECTION BEACH HOTEL

Stay at the only beach hotel in Dorchester Collection's unparalleled portfolio. Enshrined in Zaha Hadid's singular curved creation are meticulously designed suites, each attended by the legendary levels of service only Dorchester Collection can provide. Encounter outstanding culinary experiences, indulgent spa treatments, well appointed rooms or explore the grounds and stand at the water's edge, soaking in the exceptional quality of light and life.



ELA RESIDENCES  
DORCHESTER COLLECTION  
DUBAI

DORCHESTER COLLECTION  
BEACH HOTEL  
DUBAI





ELA Residences' connection with the sun, unequivocally comes into full radiance as you sink into the light-kissed water and golden sands.

This cannot be categorised as being a destination. It is a journey for all of your senses, giving you illuminating, defining experiences.

The soft lapping of the glittering water against the beach is as timeless as the endless horizon, where water ends and light begins cannot be distinguished.





From aesthetics to amenities, the perfection that is reached in ELA Residences' setting extends to all aspects of this ultimate iteration of resort life.

Encounter the comfort of the Dorchester Collection services; taste your first mouthful in the finest restaurants; immerse yourself in the branded wellness spa and facilities; feel the beach beneath your feet or retreat to the calm of your residence.

At every moment in ELA Residences, your needs are anticipated and your peace appreciated.





# AHEAD OF THE CURVE

*“Light yields endless  
opportunities, defining  
the world around us.”*

**Dame Zaha Hadid**





Zaha Hadid Architects (ZHA) redefined architecture for the 21st century with a repertoire of projects that have captured imaginations across the globe. Receiving the highest honours from professional and academic institutions worldwide, ZHA is one of the world's most consistently inventive architectural studios—and has been for four decades.

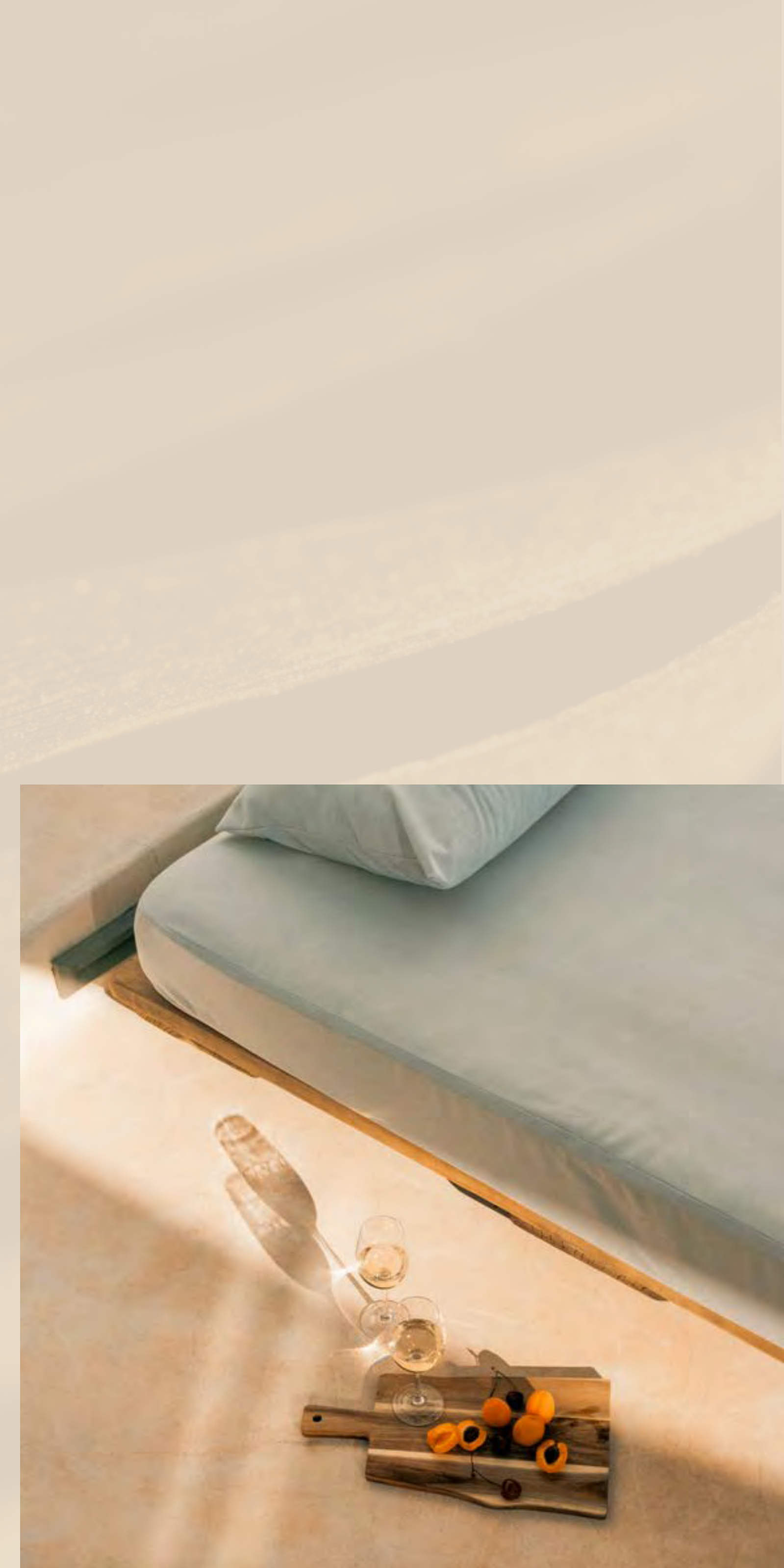
ZHA's pioneering research and experimentation are inscribed within their architecture that becomes more spatially inventive, more structurally efficient, more technologically advanced and more environmentally sustainable with each new design, marrying innovative design with ecologically sound materials and sustainable construction practices.







Imagine stepping into your own world, bathed in perpetual sunshine, where time dances to your rhythm. This is your private beachfront haven, an unfurnished canvas crafted from Zaha Hadid's visionary curves, nestled within the exclusive enclave of ELA Residences, managed by Dorchester Collection. Here, life rewrites its script, embraced by the endless glow of everlasting brightness.







This is your own beachfront haven, an unfinished canvas upon which you can make your mark. Craft a story that is solely your own, devised to make your life as timeless and as lustrous as the endless sun.





# ELA RESIDENCES FEATURES

- Architecture by Zaha Hadid
- 60 Luxury residences
- 3 Super penthouses
- Only 3 & 4 bedroom residences
- Diverse mix of duplex residences and dual-aspect layouts
- Full suite of private amenity and landscape areas exclusive to residents
- Access to hotel grounds and amenities offering
- Expansive resort style landscaping by Vladimir Djurovic
- 250m of private beachfront
- Managed by Dorchester Collection





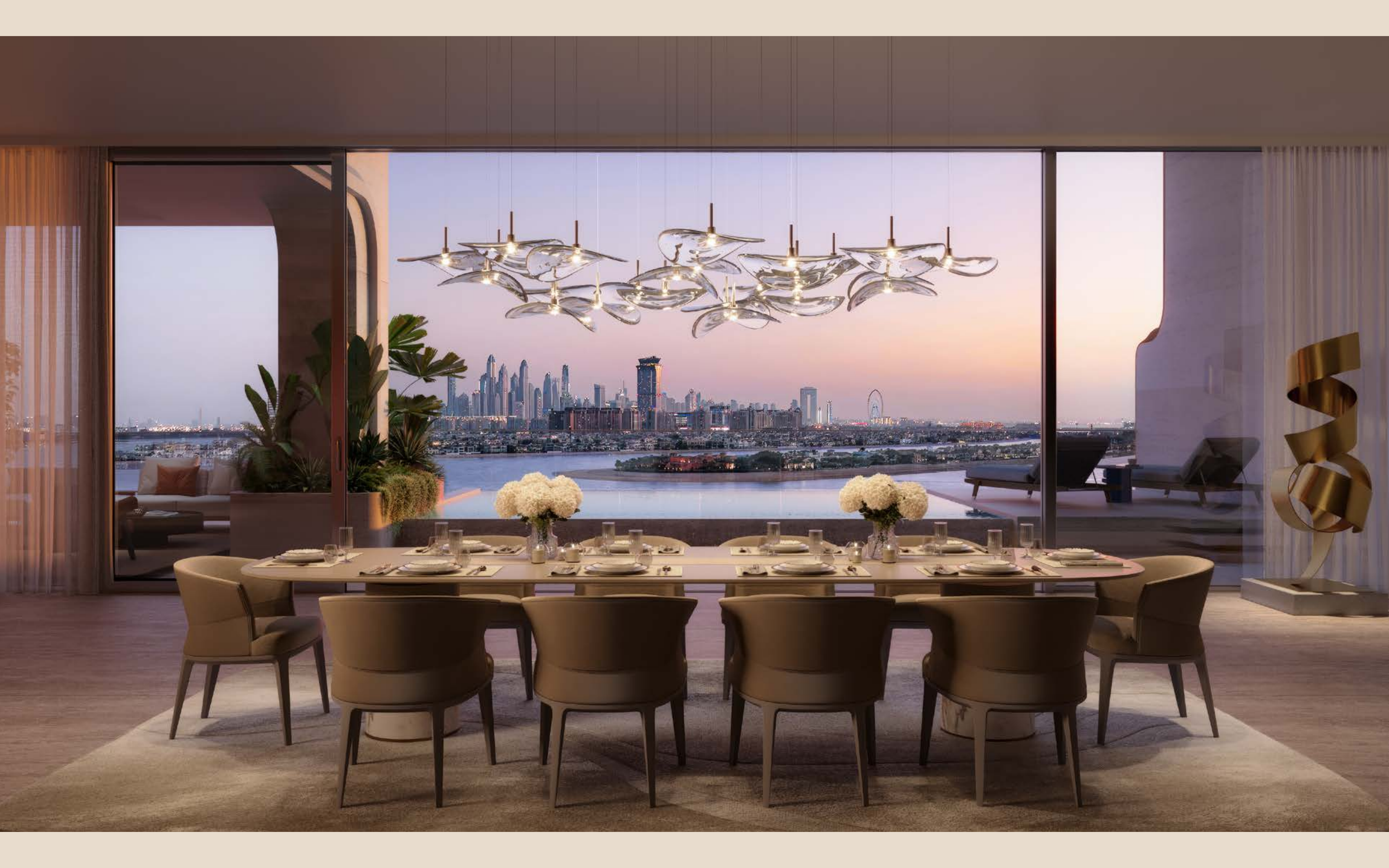




Rise in the morning and welcome the unending flow of natural light through your floor to ceiling windows. Repose on the terrace in your private pool, whose waters seem to fuse with the distant ocean.

Take a turn through the landscaped grounds to the private beach, where time stands still as you indulge in al fresco dining, spa treatments or relax in the perpetual glow of the sun.









ELA Residences allow you to reside within the intangible light that permeates this ethereal building.

Steeped in the language of opulence, the residences are tailored to your needs. Ceiling heights soar to over three metres, with broad spaces designed for entertaining or simply living to the highest possible standard.



# TAILORED FOR YOU

When selecting your interior design for your residence, you'll have the luxury of choosing from three distinct offerings, each tailored to meet your unique preferences and requirements. These packages are meticulously crafted to cater to various styles and aesthetic sensibilities, ensuring that you find the perfect fit for your home.

You are bound to discover the ideal design solution that resonates with your vision and transforms your space into a haven of style and comfort.





















































# TERRACE FEATURES

- Expansive outdoor entertaining terraces
- Seamless transition from indoor to outdoor living spaces
- Plunge private pools for each and every residence
- Elevated sun lounging platform
- Private balconies to master wing
- Outdoor jacuzzis on master wing balconies available for selected units
- Juliette balconies for each bedroom
- Dual balconies to selected simplex and duplex residences

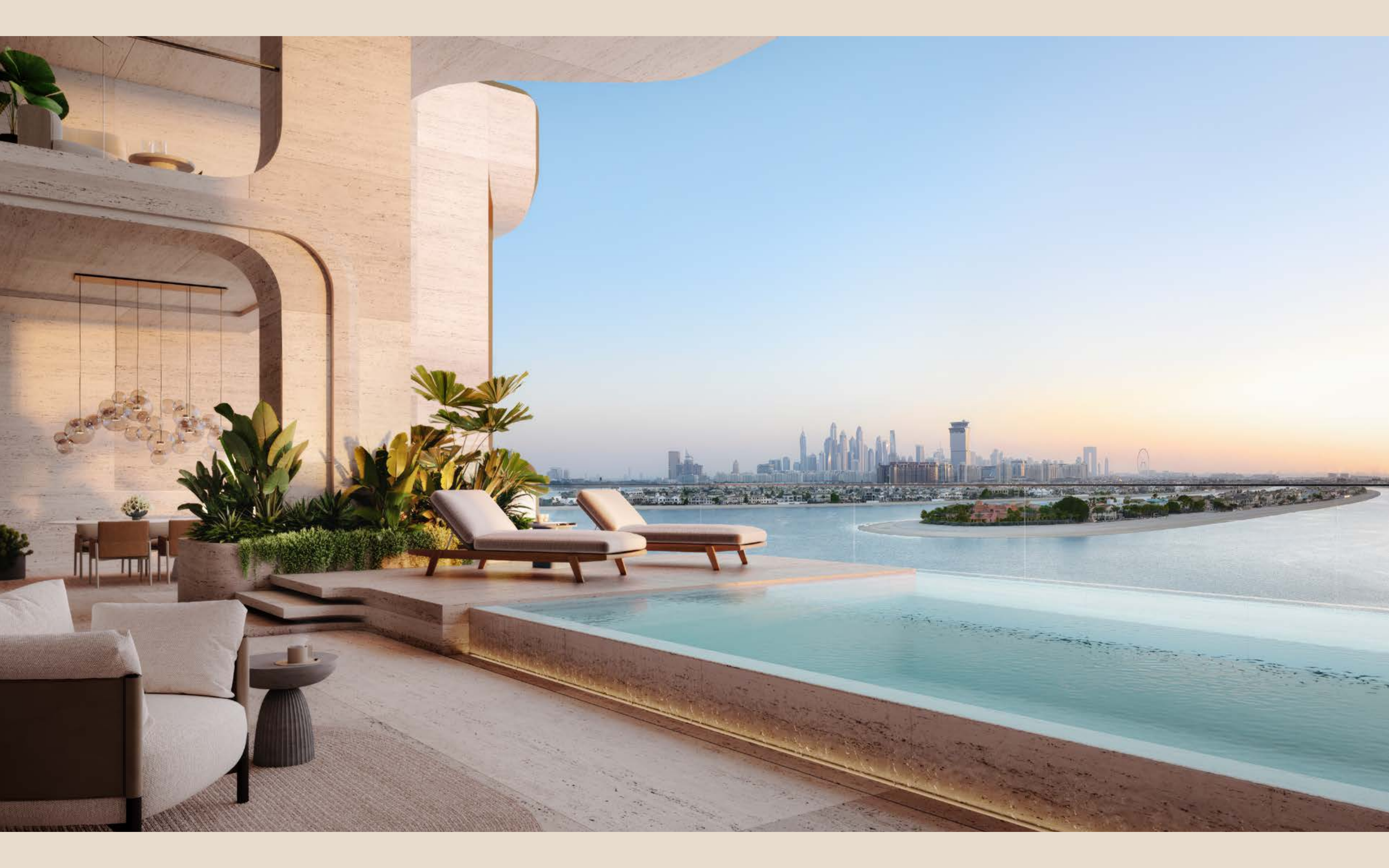


Sparkling reflections from the sea and the infinity pools on the every terrace dance across the burnished travertine stone that adorns the residences, bringing a choreographed display of light and colour into your home.

The broad terrace of each residence is set with its own pool, from which the pervading light shines like a jewel, bouncing across the surfaces of your home.









LIVING  
IN LIGHT





# ELA

RESIDENCES

*Dorchester Collection*

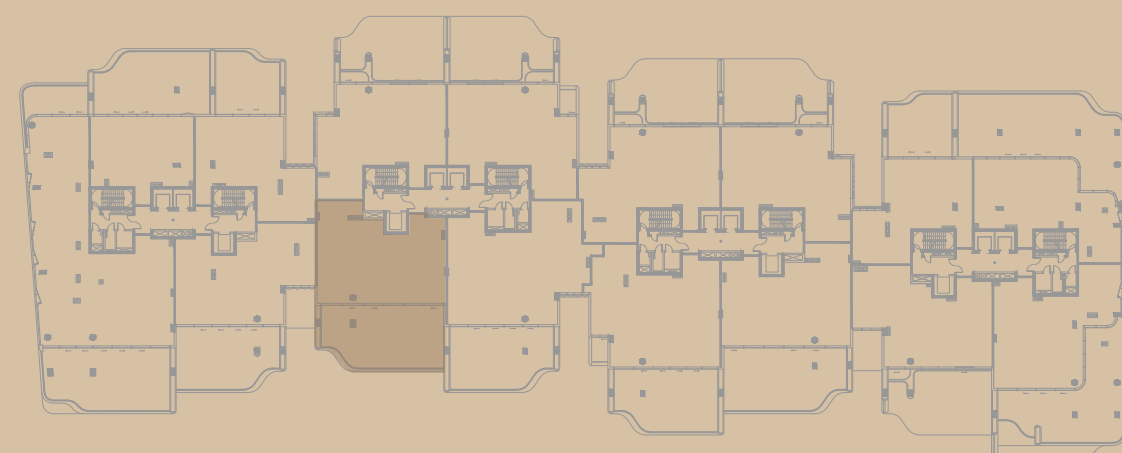
DUBAI

## 3 BEDROOM DUPLEX

Residence	369 sq.m.	3,971 sq.ft.
Terrace	150 sq.m.	1,614 sq.ft.
<b>Total</b>	<b>519 sq.m.</b>	<b>5,586 sq.ft.</b>

Ocean View

City Skyline View



Marina Skyline View

Beach View

LOWER



UPPER



The images, artist representations, amenities and interior decorations, finishes, appliances and furnishings contained in this brochure are provided for illustrative purposes only. Nothing in this brochure and/or any accompanying document and/or communication from OMNIYAT (whether verbal or in writing) constitutes a promise, representation and/or warranty in any form whatsoever. OMNIYAT reserves the right to substitute at any time without notice all or parts of the materials, appliances, equipment, fixtures and other construction and design details specified herein with similar materials, appliances, equipment and/or fixtures of equal or better quality, determined at the sole discretion of OMNIYAT. All square footages and dimensions are approximate only and may be subject to change at any time without notice.



# ELA

RESIDENCES

*Dorchester Collection*

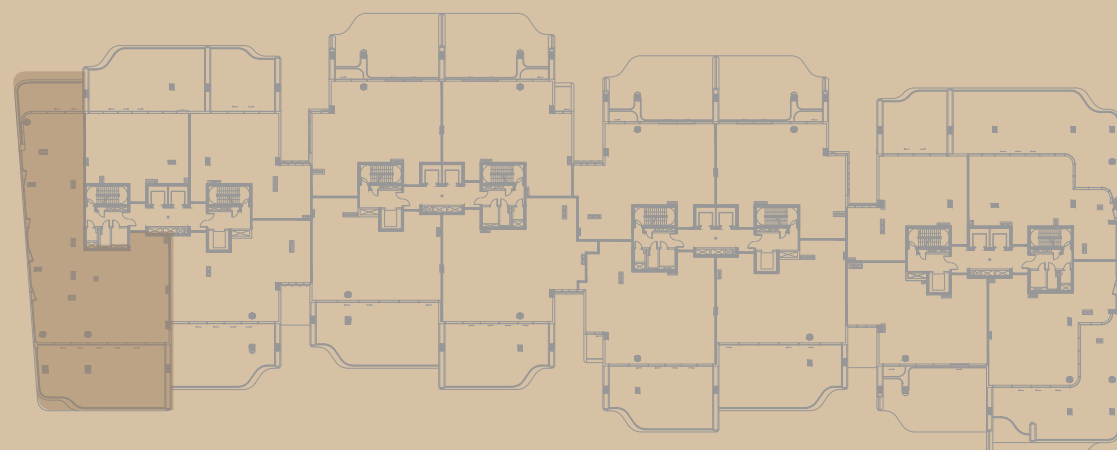
DUBAI

## 4 BEDROOM SIMPLEX

Residence	438 sq.m.	4,724 sq.ft.
Terrace	187 sq.m.	2,020 sq.ft.
<b>Total</b>	<b>626 sq.m.</b>	<b>6,744 sq.ft.</b>

Ocean View

City Skyline View



Marina Skyline View

Beach View



The images, artist representations, amenities and interior decorations, finishes, appliances and furnishings contained in this brochure are provided for illustrative purposes only. Nothing in this brochure and/or any accompanying document and/or communication from OMNIYAT (whether verbal or in writing) constitutes a promise, representation and/or warranty in any form whatsoever. OMNIYAT reserves the right to substitute at any time without notice all or parts of the materials, appliances, equipment, fixtures and other construction and design details specified herein with similar materials, appliances, equipment and/or fixtures of equal or better quality, determined at the sole discretion of OMNIYAT. All square footages and dimensions are approximate only and may be subject to change at any time without notice.



# ELA

RESIDENCES

*Dorchester Collection*

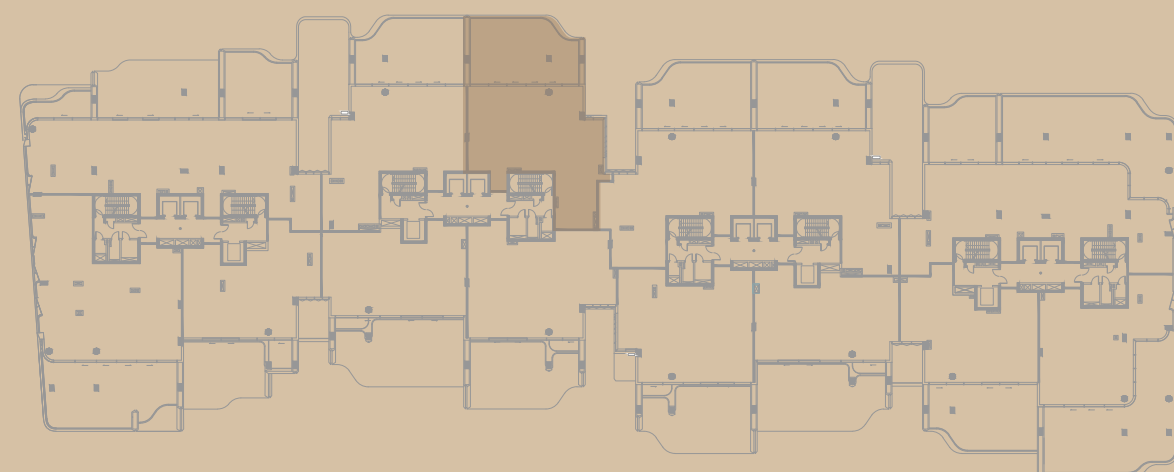
DUBAI

## 4 BEDROOM DUPLEX

Residence	502 sq.m.	5,403 sq.ft.
Terrace	140 sq.m.	1,509 sq.ft.
<b>Total</b>	<b>642 sq.m.</b>	<b>6,912 sq.ft.</b>

Ocean View

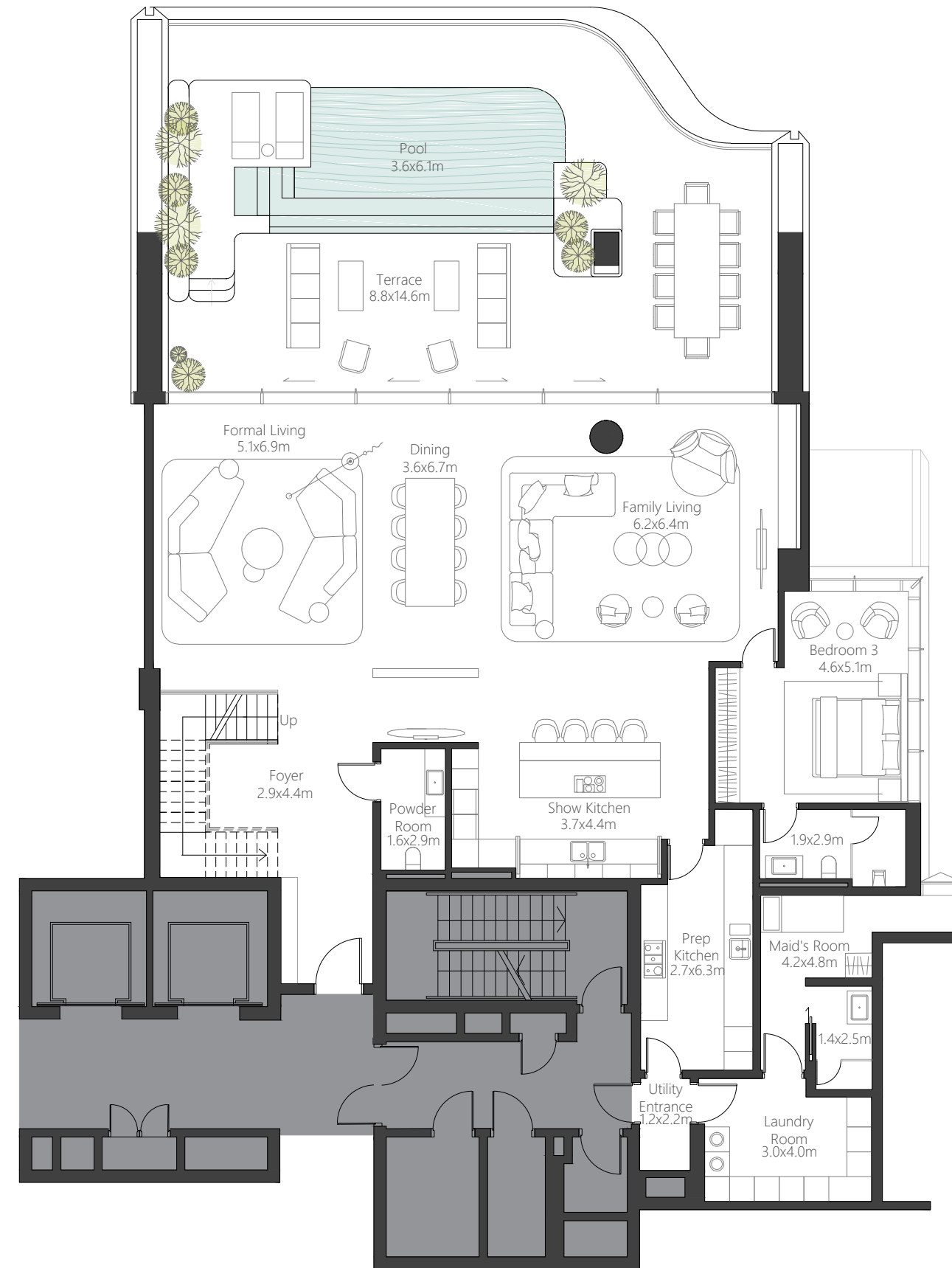
City Skyline View



Marina Skyline View

Beach View

LOWER



UPPER



The images, artist representations, amenities and interior decorations, finishes, appliances and furnishings contained in this brochure are provided for illustrative purposes only. Nothing in this brochure and/or any accompanying document and/or communication from OMNIYAT (whether verbal or in writing) constitutes a promise, representation and/ or warranty in any form whatsoever. OMNIYAT reserves the right to substitute at any time without notice all or parts of the materials, appliances, equipment, fixtures and other construction and design details specified herein with similar materials, appliances, equipment and/or fixtures of equal or better quality, determined at the sole discretion of OMNIYAT. All square footages and dimensions are approximate only and may be subject to change at any time without notice.







# INTERNATIONAL AWARD-WINNING LANDSCAPE ARCHITECTURE

VLADIMIR DJUROVIC LANDSCAPE ARCHITECTURE



















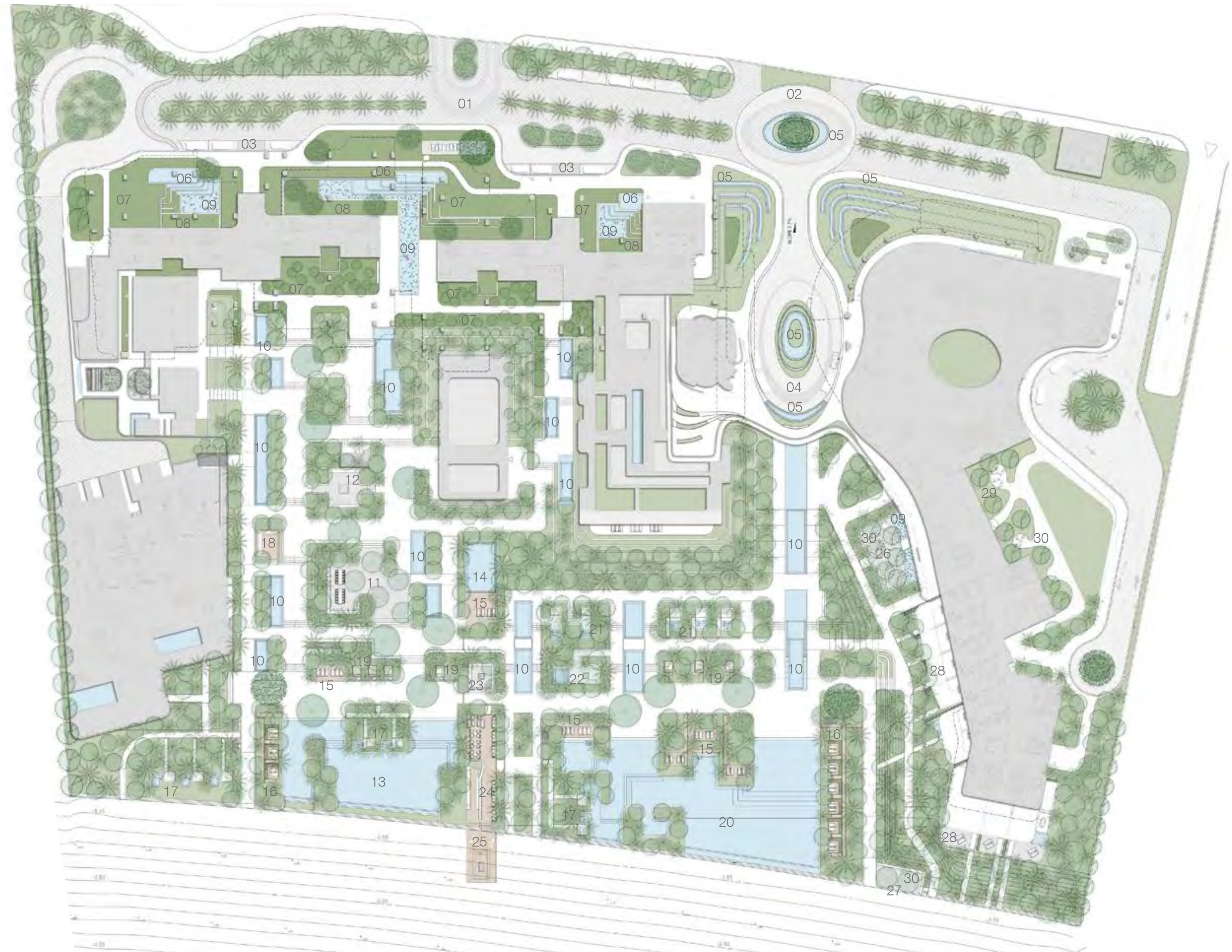






# MASTER PLAN/GROUND FLOOR

1. Residential Arrival
2. Hotel Arrival
3. Residential Drop Off
4. Hotel Drop Off
5. Hotel Water Feature
6. Cascading Water Feature
7. Tropical Garden
8. Tropical Courtyard Garden
9. Lily Pond
10. Raised Water Mirror
11. Residential Bbq/Gathering/Dining
12. Residential Fireplace
13. Residential Swimming Pool
14. Residential Family Pool
15. Lounge Chairs Wood Deck
16. Private Lounge Chairs
17. Private Daybed / Jacuzzi
18. Wood Deck Sitting Area
19. Cabanas
20. Hotel Swimming Pool
21. Hotel Private Plunge Pool
22. Hotel Private Plunge / Fireplace
23. Hotel Fireplace
24. Bar Area
25. Beach Fireplace
26. Speciality Restaurant
27. Beach Sitting Area
28. Deplx & King Suite
29. Bermed Garden
30. Loose Gravel Area







World-renowned landscape architect Vladimir Djurovic has crafted a fine balance of serenity and beauty, integrating the natural world with the architectural splendor and inspired lifestyle of ELA Residences.

The arced shapes of ELA Residences' buildings emerge from a tropical forest, with abundant planting encompassing and accentuating the architecture, fashioning shaded paths and walkways that wind right down to the waterfront.

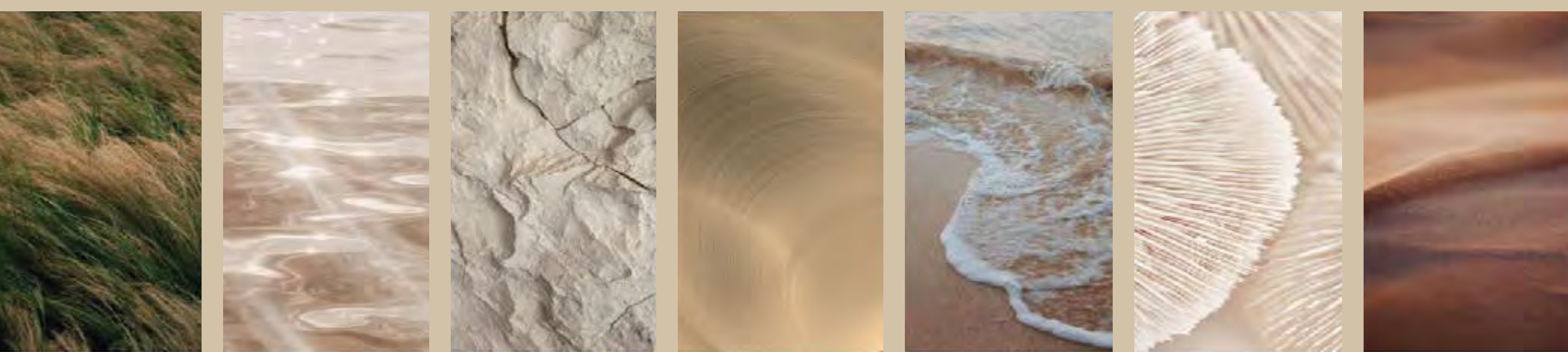
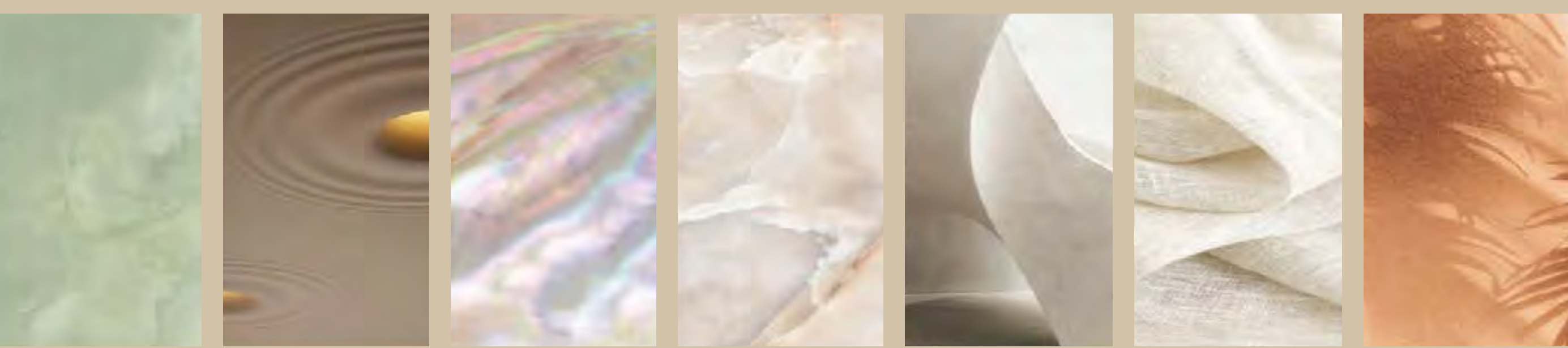
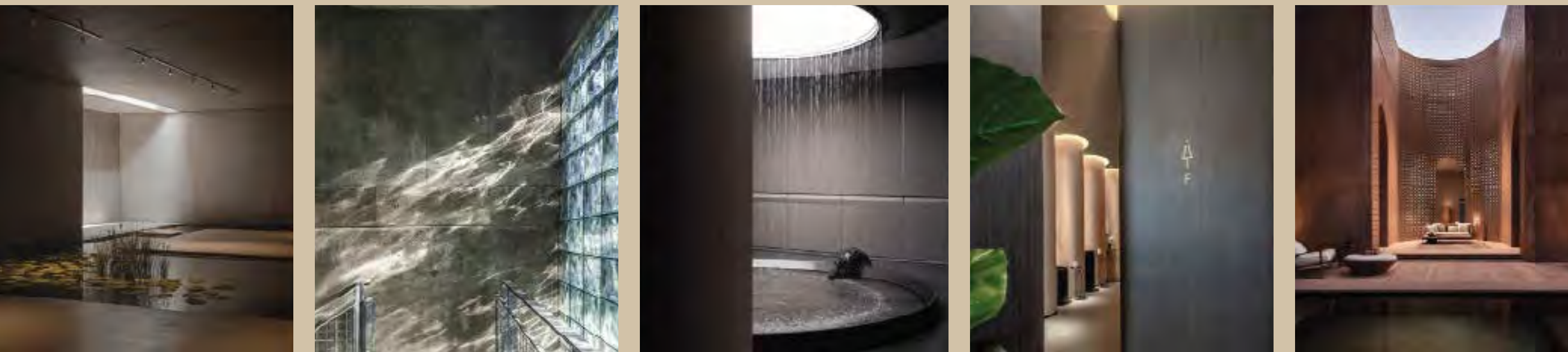
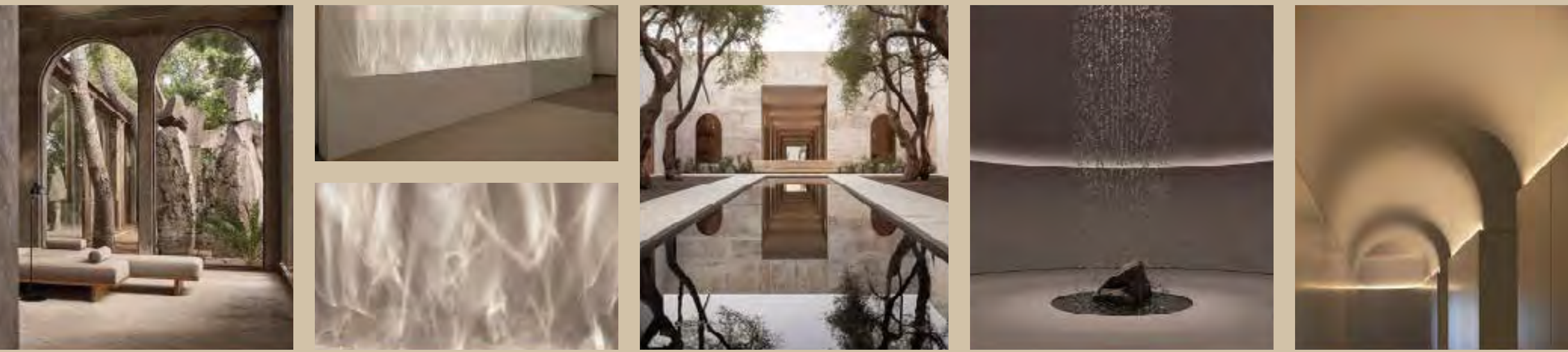
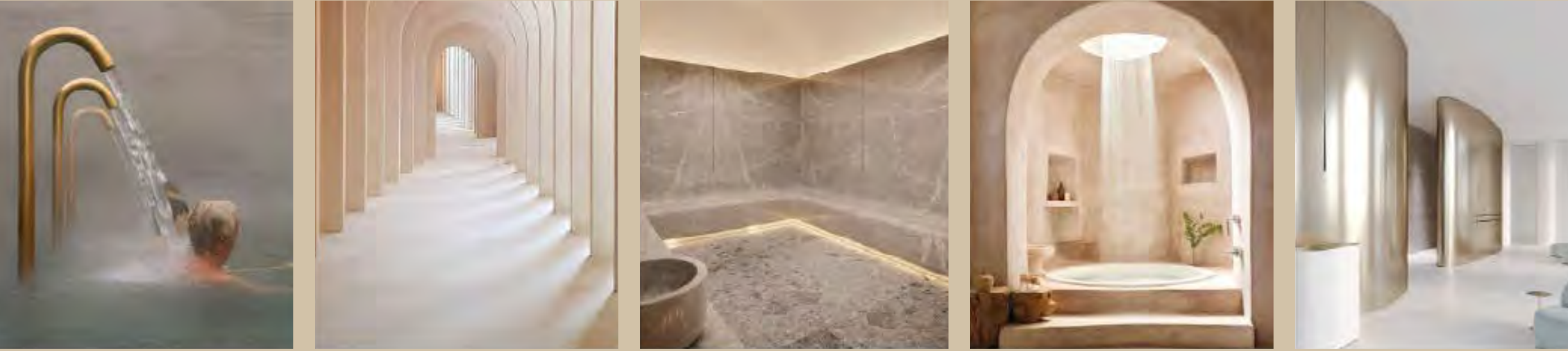


Outdoors, a vast pool, its ambient temperature carefully regulated, is edged with flowing waters. A separate pool gives your children the space and freedom to relax, while under the guidance and supervision of Dorchester Collection staff.

Should meetings intrude into this idyllic setting, secluded conference rooms, equipped with the most up-to-date IT facilities, business can be conducted in professional surroundings. Once work is completed, a walk along the private beach will bring you to an intimate and relaxing beach bar overlooking the waters of the Gulf.







# SPA & WELLNESS DESTINATION

Within this peaceful haven, you will enjoy the ultimate in relaxation through our unique, personalised sensorial experiences, with over 2000 m2 of spa and wellness offerings, including:

- . Exclusive branded operator
- . 12 private treatment rooms
- . Hair & beauty salon
- . Snow room
- . Experiential showers
- . Steam & sauna rooms
- . Multiple vitality pools
- . Private internal gardens



SERVICE THAT  
AWAITS YOU





Managed by

# ) Dorchester Collection

Dorchester Collection, renowned for their unwavering commitment to meticulous attention to detail and exceptional service, caters to the most discerning individuals.

ELA Residences, managed by Dorchester Collection, continues this legacy of excellence. Residents can revel in impeccable attention to detail and the highest level of attentive service, reflecting the exceptional standards with Dorchester Collection's iconic hotels worldwide.

## Classic

- 24/7 Residence concierge
- Doorman and porter services
- Valet parking
- Lifeguard and gym service
- 24/7 Security services
- Common area maintenance and cleaning

## À La Carte

- Housekeeping
- Laundry
- Maintenance
- Bespoke in-residence catering services
- One-off dining events & functions
- Floristry service
- Bookings, reservations & appointments
- Five-star experiences at home





## ) ( *Dorchester Collection*

Stay at the only beach hotel in Dorchester Collection's unparalleled portfolio. Enshrined in Zaha Hadid's singular curved creation are meticulously designed suites, each attended by the legendary levels of service only Dorchester Collection can provide.

Encounter outstanding culinary experiences, indulgent spa treatments, well appointed rooms or explore the grounds and stand at the water's edge, soaking in the exceptional quality of light and life.



An aerial photograph of rolling hills, likely in a desert or semi-arid region, showing various shades of brown, tan, and beige. The hills are curved and layered, creating a sense of depth and movement. The lighting is soft, highlighting the textures of the soil and the gentle slopes of the terrain.

SETTING THE STANDARD  
FOR SUSTAINABLE LIVING





OMNIYAT extends beyond crafting exquisite properties, while aiming to elevate the wellbeing and lifestyle of our homeowners.

ELA Residences will demonstrate excellence in sustainability and wellness focused design and construction, with these initiatives implemented from inception. The project will strive to achieve LEED and WELL Gold certification setting a global standard for eco-conscious luxury developments.





# OMNIYAT

THE ART OF ELEVATION

OMNIYAT is a renowned developer of luxurious architectural masterpieces. The Art of Elevation embodies our dedication to imagining the extraordinary and building it into reality. We elevate the exceptional to create immersive living masterpieces framed by Dubai's iconic skylines.

Since our establishment in 2005, OMNIYAT has redefined each project as an extraordinary, rare piece of art, partnering with global pioneers such as Foster + Partners, Zaha Hadid, Gilles et Boissier, Dorchester Collection and more.

The OMNIYAT touch lies in our ability to enhance experiences and shape the future of luxury living.





# OMNIYAT

THE ART OF ELEVATION

The images, artist representations, amenities and interior decorations, finishes, appliances and furnishings contained in this brochure are provided for illustrative purposes only. Nothing in this brochure and/or any accompanying document and/or communication from OMNIYAT (whether verbal or in writing) constitutes a promise, representation and/ or warranty in any form whatsoever.

OMNIYAT reserves the right to substitute at any time without notice all or parts of the materials, appliances, equipment, fixtures and other construction and design details specified herein with similar materials, appliances, equipment and/or fixtures of equal or better quality, determined at the sole discretion of OMNIYAT.

All square footages and dimensions are approximate only and may be subject to change at any time without notice.