

O N E · B  
T O W E R

THE HEART OF LUXURY

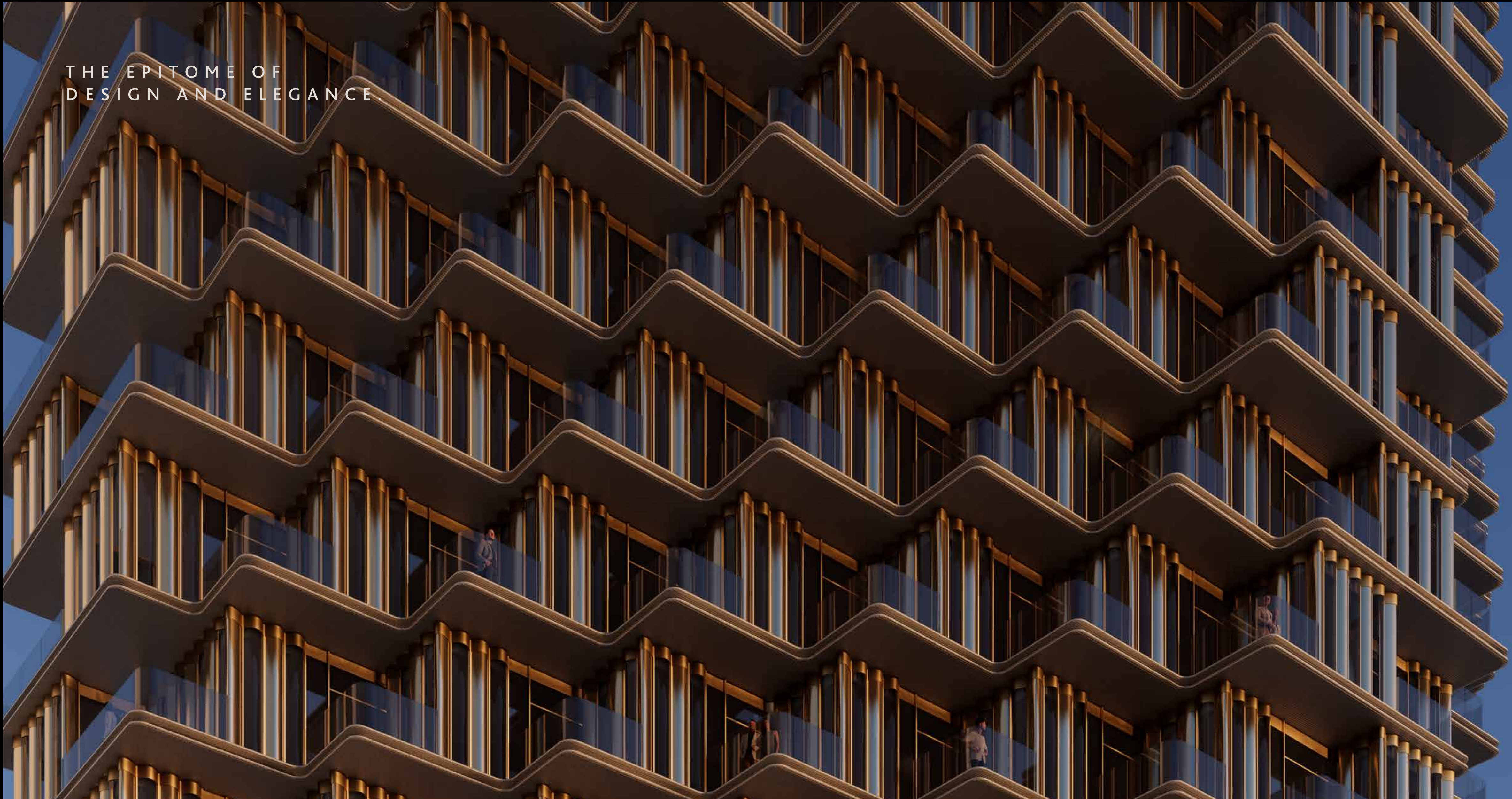


A LIVING EXPERIENCE  
CRAFTED WITH PASSION  
AND REFINEMENT.

The exceptional design and craftsmanship are evident in even the smallest detail of the tower. Welcoming you to a universe of grandeur is the striking podium with its elevated ceiling and towering column structures. Leaving you in awe the moment you step in, the podium stands as a testament to the opulence you experience inside the tower.

The homes are a world apart. Featuring one, two, three-bedroom as well as duplex and penthouse units, the homes come with expansive spaces and are meticulously designed to impart an aura of absolute luxury and comfort. Equally magnificent are the lifestyle amenities – the finest Dubai has to offer.

THE EPITOME OF  
DESIGN AND ELEGANCE



## UNSTUDIO .

GROUNDBREAKING ARCHITECTURE  
AND DESIGN AT ALL SCALES .

- Over 140 completed projects worldwide.
- More than 30 years of international project experience.
- Winners of countless global awards.

### RENOWNED HOSPITALITY PROJECTS :

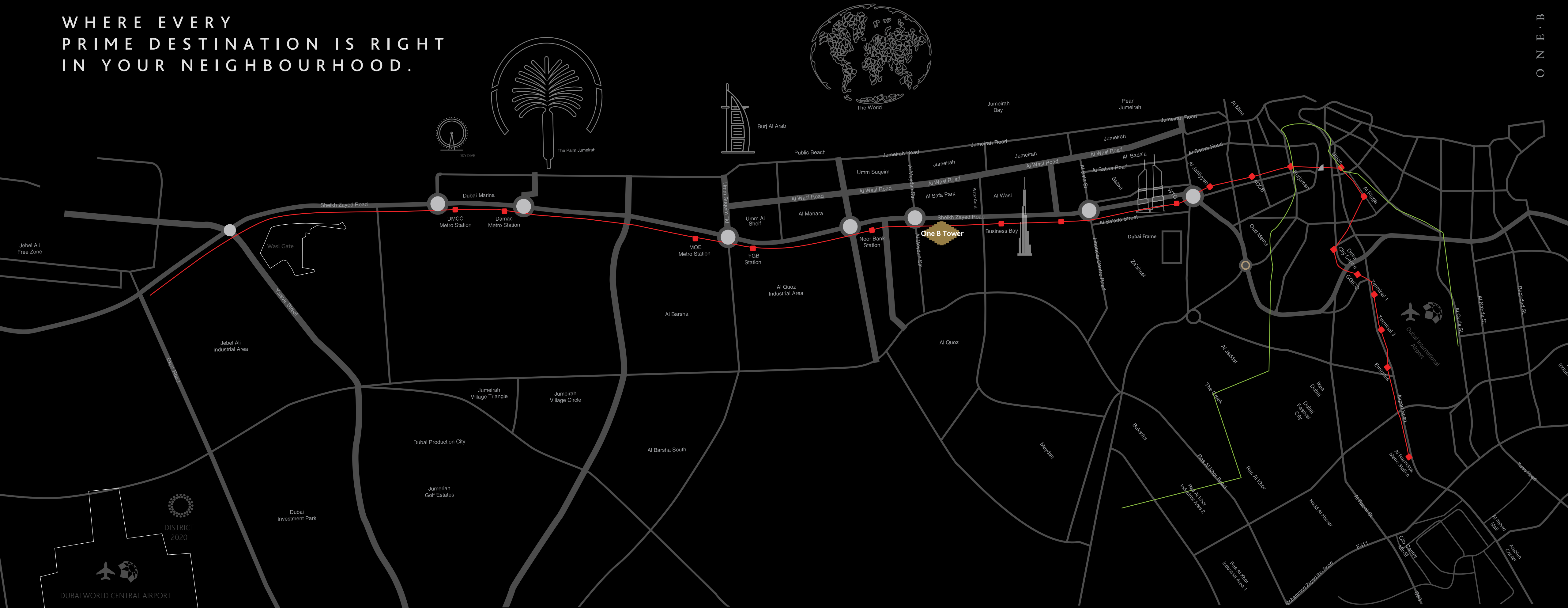
- Wast Tower, Dubai
- Mandarin Oriental Hotel and Residences, Istanbul
- Melbourne Four Seasons, Melbourne
- Green Cape Spa Resort, Georgia
- The Island MGM Grand, Bellagio, Aria Dubai
- Gyeongdo Island, Korea
- Marina Galleria, Athens
- Manoel Island, Malta
- Five Franklin Place, New York

The logo for UNSTUDIO is centered on a dark background with a grid of small white dots. The word "UNS" is written in a large, bold, white, sans-serif font. Below it, the word "UNSTUDIO" is written in a smaller, all-caps, white, sans-serif font.

UNS  
UNSTUDIO

WHERE EVERY  
PRIME DESTINATION IS RIGHT  
IN YOUR NEIGHBOURHOOD.

ONE · B



DUBAI WATER CANAL  
BOARDWALK - **1 MINUTE**

SAFA PARK - **5 MINUTES**

JUMEIRAH BEACH - **5 MINUTES**

BUSINESS BAY  
METRO STATION - **10 MINUTES**

CYCLING TRACK TO JUMEIRAH  
BEACH - **20 MINUTES**

JOGGING TRACK TO JUMEIRAH  
BEACH - **25 MINUTES**

## BREATHTAKING VIEWS THAT MAKE YOUR EVERYDAY RICHER .

Nestled along the iconic Sheikh Zayed Road, ONE B's unparalleled location offers a captivating panorama as it gracefully overlooks the stunning Dubai Water Canal and Safa Park.

- Sea view
- Safa Park view
- Dubai Water Canal view
- Godolphin Race Track view



PARKING PODIUM





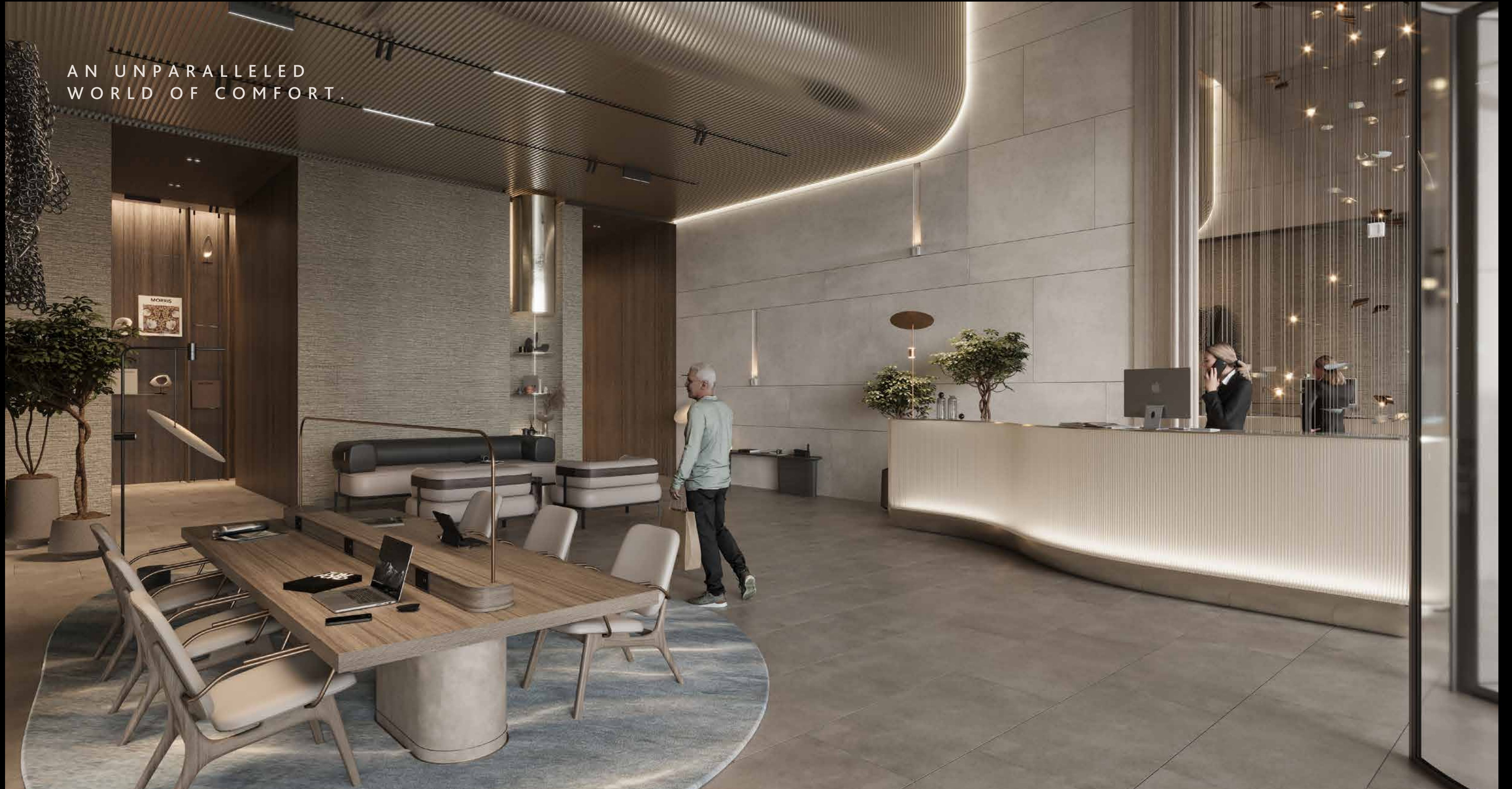
LOBBY ENTRANCE



LOBBY



AN UNPARALLELED  
WORLD OF COMFORT.



RESTO CAFE



## ELEVATING YOUR LIFESTYLE EXPERIENCE.

The amenities at ONE B give residents the opportunity to relax, play, train, and commit to a wellness-first lifestyle. From state-of-the-art training equipment, gym areas and yoga spaces, a podium-level swimming pool, enticing retail spaces to the enchanting and vibrant kids' playroom, ONE B is a haven for balanced living.





OUTDOOR POOL

KIDS' PLAYROOM



BALCONY VIEW



SHEIKH ZAYED ROAD VIEW





DINING ROOM



LIVING SPACE



BEDROOM



3 BEDROOM SKY VILLA



N E · B

O N E · B

## ONE B.

### WASL'S TRIBUTE TO THE 1 BILLION MEALS ENDOWMENT INITIATIVE.

Wasl is proud to present ONE B - an exquisitely crafted residential tower that boasts refined standards in sophistication and opulence. Towering majestically over the picturesque Dubai Water Canal on Sheikh Zayed Road, the 47-storey ONE B will feature an awe-inspiring design and amenities that will redefine luxury which is synonymous with the city.

With a commitment to support the 1 Billion Meals Endowment programme, Wasl is collaborating with Mohammed bin Rashid Al Makhtoum Global Initiatives - and will contribute the proceeds of ONE B to the programme - with the objective of growing the fund value to AED 1 Billion. By stepping forward, Wasl aims to step up the momentum of the initiative and contribute to strengthening the UAE's humanitarian efforts.

